

GAS FURNACES



CLASSIC® 90 HIGH EFFICIENCY UPFLOW GAS FURNACES

The Rheem® Classic® 90 High Efficiency line of upflow gas furnaces are designed for utility rooms, closets, or alcoves. **Because of the low-profile 34 inch height, the RGRJ-model can be used vertically to satisfy most applications that traditionally call for a horizontal furnace.**

The design is certified by CSA.

Features

- Low profile "34 inch" design is lighter and easier to handle and leaves room for optional accessories.
- Left or right side gas, electric, and condensate drainage connections on upflow models.
- Integrated control board manages all operational functions and provides accessory hookups for an electronic air cleaner.
- A slow-opening gas valve and a specially designed inducer system make it one of the quietest furnaces on the market today.
- Pre-paint galvanized steel cabinet.
- Optional indoor or outdoor combustion air. In addition, combustion air may be piped to either the top or right side of the cabinet on all upflow models. A special molded fitting is provided to ease installation.
- Control board diagnostics.

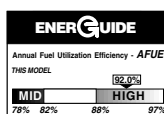
A variety of cooling coils and plenums designed to use with the Classic 90 gas furnaces are available as optional accessories for air conditioning models.

†A.F.U.E. (Annual Fuel Utilization Efficiency) calculated in accordance with Department of Energy test procedures.

RGRJ- SERIES

Models with Input Rates
from 45,000 to 120,000 BTU/HR
[13.19 to 35.17 kW]

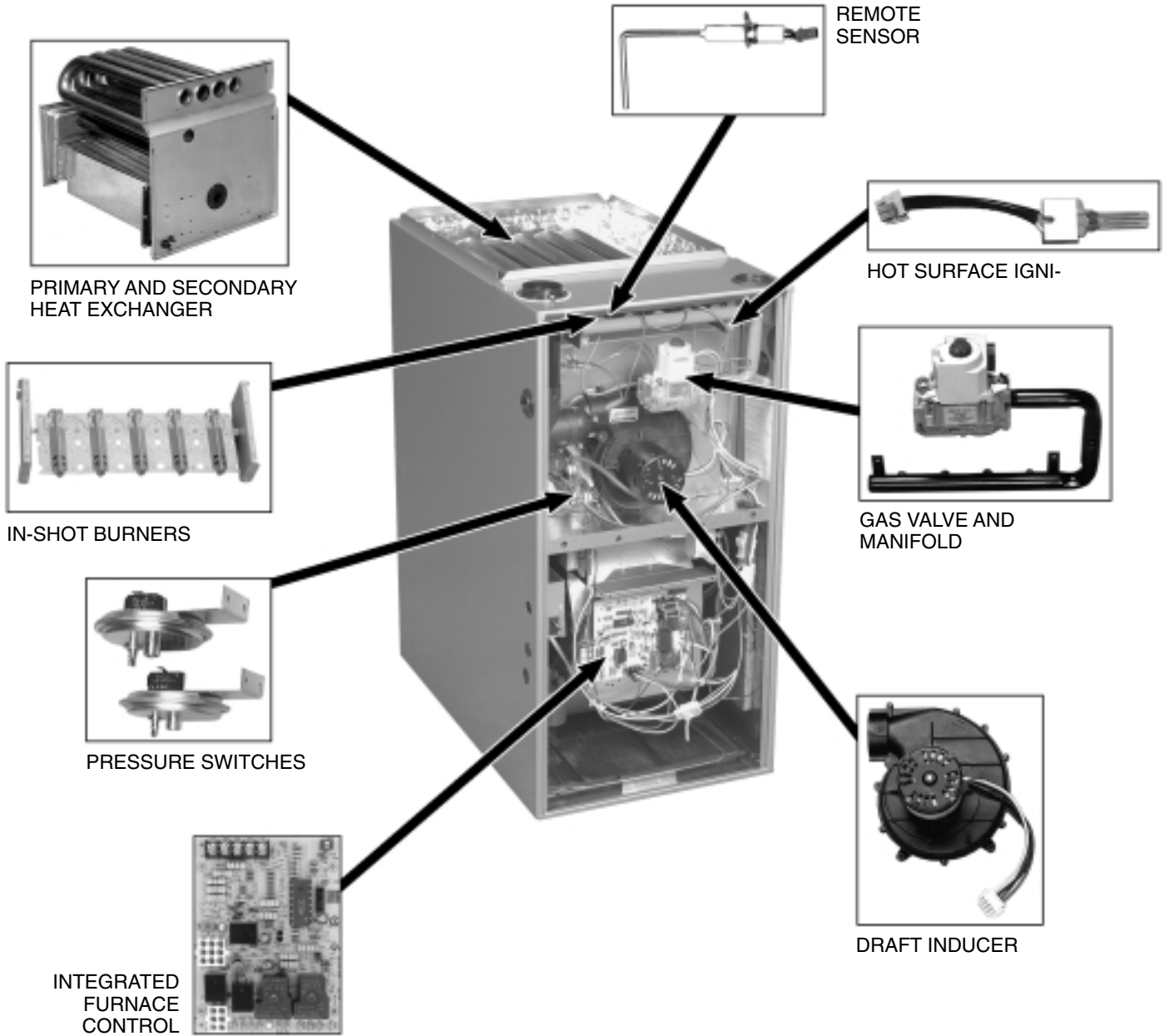
(All Models 90% A.F.U.E.† or Above)



Annual Fuel Utilization Efficiency - AFUE	
THIS MODEL	
MID	HIGH
78% 82%	88% 97%



CLASSIC 90 HIGH EFFICIENCY UPFLOW GAS FURNACE



STANDARD EQUIPMENT

Completely assembled and wired; heat exchanger; primary: aluminized steel, secondary: 29-4C stainless steel; induced draft; pressure switches; redundant main gas control; blower compartment door safety switch; solid state time on/off blower control; limit controls; manual shut-off valve; 100% safety lock out; cool fan off delay; field selectable heat fan off delay; one hour automatic retry; self-test diagnostics; flame sense current diagnostics; electronic air cleaner connections; pressure regulator for natural and L.P. (propane) gases; transformer; direct drive, multi-speed blower motor. (Please note: a thermostat is not included as standard equipment.)

OPTIONAL EQUIPMENT

(See Accessory Page)

NOTE: Furnace is not listed for use with fuels other than natural or L.P. (propane) gas.

All models can be converted by a qualified distributor or local service dealer to use L.P. (propane) gas without changing burners. Factory approved kits must be used to convert from natural to L.P. (propane) gas and may be ordered as optional accessories from a parts distributor.

For L.P. (propane) operation, refer to Conversion Kit Index Form.

WARNING
THIS FURNACE IS NOT APPROVED
OR RECOMMENDED
FOR USE IN MOBILE HOMES

PHYSICAL DATA AND SPECIFICATIONS—UPFLOW MODELS

U.S. and Canadian Models

MODEL NUMBERS RGRJ- SERIES	04EMAES	06EMAES	07EMAES	07EYBES	07EYBGS	09EZAGS	09EZAJS	10EZAGS	10EZAJS	12ERAGS	12ERAJS
Input-BTU/Hr [kW] ①	45,000 [13.19]	60,000 [17.58]	75,000 [21.98]	75,000 [21.98]	75,000 [21.98]	90,000 [26.37]	90,000 [26.37]	105,000 [30.77]	105,000 [30.77]	120,000 [35.17]	120,000 [35.17]
Heating Capacity BTU/Hr [kW]	42,000 [12.31]	56,000 [16.41]	70,000 [20.51]	70,000 [20.51]	70,000 [20.51]	84,000 [24.61]	84,000 [24.61]	97,000 [28.43]	97,000 [28.43]	113,000 [33.12]	113,000 [33.12]
High Altitude Input [kW] ②	40,500 [11.87]	54,000 [15.83]	67,500 [19.78]	67,500 [19.78]	67,500 [19.78]	81,000 [23.73]	81,000 [23.73]	94,500 [27.70]	94,500 [27.70]	108,000 [31.65]	108,000 [31.65]
High Altitude Output Capacity [kW] ②	37,800 [11.07]	50,400 [14.77]	63,000 [18.46]	63,000 [18.46]	63,000 [18.46]	76,000 [22.27]	76,000 [22.27]	87,500 [25.64]	87,500 [25.64]	100,000 [29.31]	100,000 [29.31]
Blower (D x W) [mm]	11 x 7 [279 x 178]	11 x 7 [279 x 178]	11 x 7 [279 x 178]	12 x 7 [305 x 178]	12 x 7 [305 x 178]	12 x 11 [305 x 279]	12 x 11 [305 x 279]	12 x 11 [305 x 279]	12 x 11 [305 x 279]	11 x 10 [279 x 254]	11 x 10 [279 x 254]
Motor H.P. [W] Speeds-Type	1/2 [373] 4-PSC	1/2 [373] 3-PSC	1/2 [373] 3-PSC	1/2 [373] 3-PSC	3/4 [559] 3-PSC	1/2 [373] 3-PSC	3/4 [559] 3-PSC	1/2 [373] 3-PSC	3/4 [559] 3-PSC	1/2 [373] 3-PSC	3/4 [559] 3-PSC
Motor Full Load Amps	6.8	6.8	6.8	8.0	9.5	8.0	9.5	8.0	9.5	8.0	9.5
Heating Speed	Med-Low	Low	Med	Med	Low	Med	Low	Med	Low	Med	Low
Cooling Speed	High	High	High	High	High	High	High	High	High	High	High
Heat Ext. Static Pressure (In. W.C.) [kPa]	.10 [.025]	.12 [.029]	.12 [.029]	.12 [.029]	.12 [.029]	.15 [.037]	.15 [.037]	.20 [.049]	.20 [.049]	.20 [.049]	.20 [.049]
Rated Ext. Static Pressure (In. W.C.) [kPa]	.50 [.12]	.50 [.12]	.50 [.12]	.50 [.12]	.50 [.12]	.50 [.12]	.50 [.12]	.50 [.12]	.50 [.12]	.50 [.12]	.50 [.12]
Heating C.F.M. @ .2" [.049 kPa] W.C. E.S.P. [L/s]	885 [417]	845 [398]	1050 [495]	1275 [600]	1275 [600]	1465 [691]	1465 [691]	1445 [682]	1445 [682]	1580 [745]	1580 [745]
Cooling C.F.M. @ .5" [.124 kPa] W.C. E.S.P. [L/s]	1195 [564]	1100 [519]	1110 [524]	1440 [679]	1540 [725]	1580 [746]	1910 [901]	1540 [727]	1810 [854]	1660 [783]	1900 [897]
Temperature Rise Range °F [°C]	30-60 [16.7-33.3]	40-70 [22.2-38.9]	45-75 [25-41.7]	40-70 [22.2-38.9]	40-70 [22.2-38.9]	35-65 [19.4-36.1]	35-65 [19.4-36.1]	50-80 [27.8-44.4]	50-80 [27.8-44.4]	50-80 [27.8-44.4]	50-80 [27.8-44.4]
Return Air Cabinets (Opt.) RXGR- Filter Size [mm]	C17B (2) 12" x 16" [305 x 406]	C17B (2) 12" x 16" [305 x 406]	C17B (2) 12" x 16" [305 x 406]	C21B (2) 12" x 20" [305 x 508]	C21B (2) 12" x 20" [305 x 508]	C21B (2) 12" x 16" [305 x 406]	C21B (2) 12" x 16" [305 x 406]	C21B (2) 12" x 16" [305 x 406]	C21B (2) 12" x 16" [305 x 406]	C24B (2) 24" x 16" [609 x 406]	C24B (2) 24" x 16" [609 x 406]
Approx. Shipping Weight (Lbs.) [kg]	111 [50.3]	117 [53.1]	123 [55.8]	123 [55.8]	123 [55.8]	148 [67.1]	148 [67.1]	152 [68.9]	152 [68.9]	160 [72.6]	160 [72.6]
AFUE ③	93.5%	92.5%	92.8%	92.0%	92.0%	93.5%	93.5%	92.0%	92.0%	93.5%	93.5%
California Seasonal Efficiency ③	84.68%	86.44%	87.16%	85.16%	85.16%	85.96%	85.96%	86.93%	86.93%	87.57%	87.57%

NOTES: All models are 115V, 60HZ, 1Ø. Gas connection size for all models is 1/2" [13 mm] N.P.T.

① See Conversion Kit Index Form for high altitude derate.

② Canadian installations only.

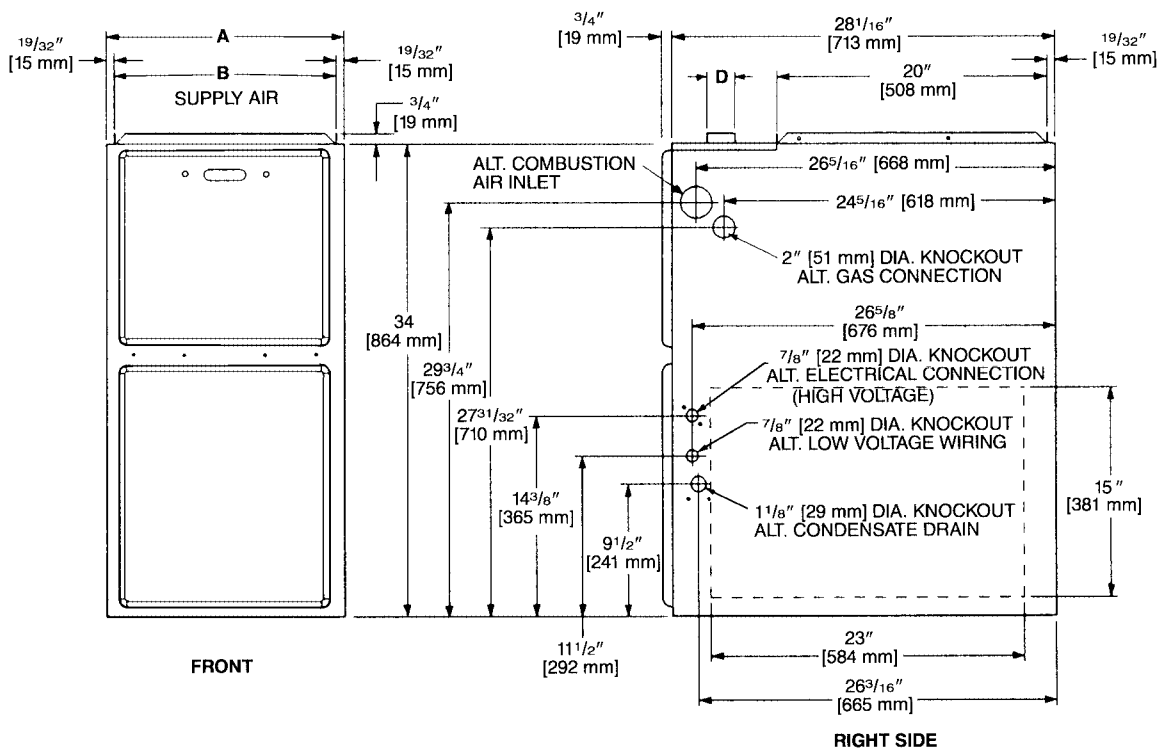
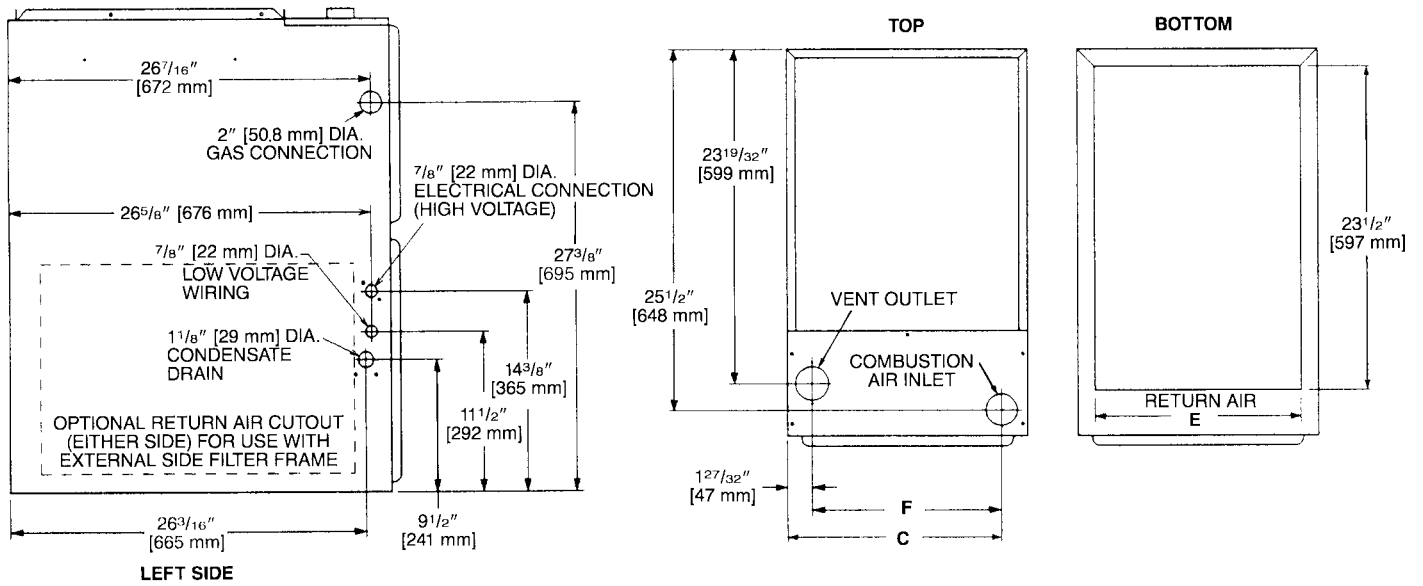
③ In accordance with D.O.E. test procedures.

MODEL IDENTIFICATION

R	G	R	J	—	07E	M	A	E	S
Rheem	Gas Furnace	Upflow Condensing Gas Furnace	Design Series		Heating Input Designation	Blower Size	Variations	Heat/Cool Designation	Fuel Code
					Hot Surface Ignition	M = 11 x 7 [279 x 178 mm]	A = Std. B = Wide Cabinet	E = 1100-1300 CFM [519-613.5 L/s] G = 1500-1700 CFM [707.9-802.3 L/s] J = 1900-2100 CFM [896.7-991.1 L/s]	S = U.S. & Canadian Natural Gas
					Input BTU/HR	R = 11 x 10 [279 x 254 mm]			
					04E 45,000 [13 kW]	Z = 12 x 11 [305 x 279 mm]			
					06E 60,000 [17.6 kW]	Y = 12 x 7 [305 x 178 mm]			
					07E 75,000 [20.5 kW]				
					09E 90,000 [26.4 kW]				
					10E 105,000 [30.7 kW]				
					12E 120,000 [35.2 kW]				

[] Designates Metric Conversions

UPFLOW MODELS



MODEL RGRJ-	A	B	C	D	E	F	LEFT SIDE	MINIMUM CLEARANCE (IN.) [mm]					SHIP WGTs. [kg]
								RIGHT SIDE	BACK	TOP	FRONT	VENT	
04*M	17 ¹ / ₂ [445]	16 ¹¹ / ₃₂ [415]	15 ⁵ / ₈ [397]	2 [51]	15 [422]	13 ²⁵ / ₃₂ [352]	0	0	0	1 [25]	2 [51]	0	111 [50]
06*M	17 ¹ / ₂ [445]	16 ¹¹ / ₃₂ [415]	15 ⁵ / ₈ [397]	2 [51]	15 [422]	13 ²⁵ / ₃₂ [352]	0	0	0	1 [25]	2 [51]	0	117 [53]
07*M	17 ¹ / ₂ [445]	16 ¹¹ / ₃₂ [415]	15 ⁵ / ₈ [397]	2 [51]	15 [422]	13 ²⁵ / ₃₂ [352]	0	0	0	1 [25]	2 [51]	0	123 [56]
07*Y	21 [533]	19 ²⁷ / ₃₂ [504]	19 ¹ / ₈ [487]	2 [51]	18 ¹ / ₂ [511]	17 ⁹ / ₃₂ [441]	0	0	0	1 [25]	2 [51]	0	123 [56]
09*Z	21 [533]	19 ²⁷ / ₃₂ [504]	19 ¹ / ₈ [487]	2 [51]	18 ¹ / ₂ [511]	17 ⁹ / ₃₂ [441]	0	0	0	1 [25]	2 [51]	0	148 [67]
10*Z	21 [533]	19 ²⁷ / ₃₂ [504]	19 ¹ / ₈ [487]	2 [51]	18 ¹ / ₂ [511]	17 ⁹ / ₃₂ [441]	0	0	0	1 [25]	2 [51]	0	152 [69]
12*R	24 ¹ / ₂ [622]	23 ¹¹ / ₃₂ [593]	22 ⁵ / ₈ [575]	2 [51]	22 [600]	20 ²⁵ / ₃₂ [530]	0	0	0	1 [25]	2 [51]	0	160 [73]

BLOWER PERFORMANCE DATA—RGRJ MODELS

MODEL NUMBER RGRJ-SERIES	BLOWER SIZE [mm]	MOTOR H.P. [W]	BLOWER SPEED	CFM [L/s] AIR DELIVERY EXTERNAL STATIC PRESSURE INCHES WATER COLUMN [kPa]						
				0.1 [.02]	0.2 [.05]	0.3 [.07]	0.4 [.10]	0.5 [.12]	0.6 [.15]	0.7 [.17]
				04EMAES	11 x 7 [279 x 178]	1/2 [373]	LOW MED-LO MED-HI HIGH	805 [380] 920 [434] 1140 [538] 1360 [642]	780 [368] 885 [417] 1110 [524] 1320 [623]	760 [358] 850 [401] 1085 [512] 1280 [604]
06EMAES	11 x 7 [279 x 178]	1/2 [373]	LOW MED HIGH	880 [415] 1060 [500] 1260 [594]	845 [398] 1025 [483] 1215 [573]	815 [384] 990 [467] 1175 [554]	790 [373] 960 [453] 1135 [535]	760 [358] 925 [436] 1100 [519]	715 [337] 880 [415] 1040 [491]	670 [316] 835 [394] 985 [465]
07EMAES	11 x 7 [279 x 178]	1/2 [373]	LOW MED HIGH	880 [415] 1090 [514] 1300 [613]	850 [401] 1050 [495] 1255 [592]	825 [389] 1010 [477] 1210 [571]	785 [370] 970 [458] 1160 [547]	750 [354] 925 [436] 1110 [524]	702 [331] 875 [413] 1055 [498]	655 [309] 825 [389] 1005 [474]
07EYBES	12 x 7 [305 x 178]	1/2 [373]	LOW MED HIGH	1185 [559] 1405 [668] 1595 [753]	1160 [547] 1375 [649] 1560 [736]	1140 [538] 1350 [637] 1525 [720]	1115 [526] 1310 [618] 1480 [698]	1095 [517] 1270 [599] 1440 [679]	1065 [503] 1235 [583] 1380 [651]	1040 [491] 1195 [564] 1325 [625]
07EYBGS	12 x 7 [305 x 178]	3/4 [559]	LOW MED HIGH	1405 [668] 1595 [753] 1835 [866]	1375 [649] 1560 [736] 1780 [840]	1350 [637] 1525 [720] 1730 [816]	1310 [618] 1480 [698] 1675 [791]	1270 [599] 1440 [679] 1625 [767]	1235 [583] 1380 [651] 1555 [734]	1195 [564] 1325 [625] 1480 [698]
09EZAGS	12 x 11 [305 x 279]	1/2 [373]	LOW MED HIGH	1235 [582] 1490 [703] 1720 [811]	1210 [571] 1465 [691] 1670 [788]	1180 [559] 1445 [679] 1620 [764]	1150 [543] 1405 [663] 1600 [755]	1120 [528] 1375 [649] 1580 [746]	1075 [507] 1315 [620] 1520 [717]	1035 [488] 1255 [592] 1460 [689]
09EZAJS	12 x 11 [305 x 279]	3/4 [559]	LOW MED HIGH	1490 [703] 1720 [811] 2100 [991]	1465 [691] 1670 [788] 2050 [967]	1445 [679] 1620 [764] 2000 [944]	1405 [663] 1600 [755] 1955 [923]	1375 [649] 1580 [746] 1910 [901]	1315 [620] 1520 [717] 1825 [861]	1255 [592] 1460 [689] 1745 [823]
10EZAGS	12 x 11 [305 x 279]	1/2 [373]	LOW MED HIGH	1230 [580] 1490 [703] 1710 [807]	1205 [567] 1445 [682] 1665 [786]	1180 [557] 1405 [663] 1620 [764]	1155 [545] 1375 [649] 1580 [746]	1130 [533] 1350 [637] 1540 [727]	1090 [514] 1295 [611] 1475 [696]	1050 [495] 1240 [585] 1410 [665]
10EZAJS	12 x 11 [305 x 279]	3/4 [559]	LOW MED HIGH	1490 [703] 1710 [807] 2010 [949]	1445 [682] 1665 [786] 1955 [923]	1405 [663] 1620 [764] 1900 [897]	1375 [649] 1580 [746] 1855 [875]	1350 [637] 1540 [727] 1810 [854]	1295 [611] 1475 [696] 1710 [807]	1240 [585] 1410 [665] 1610 [859]
12ERAGS	11 x 10 [279 x 245]	1/2 [373]	LOW MED HIGH	1320 [623] 1610 [760] 1870 [882]	1305 [616] 1580 [746] 1820 [860]	1290 [608] 1555 [734] 1775 [838]	1260 [596] 1515 [715] 1715 [809]	1230 [580] 1475 [696] 1660 [783]	1185 [559] 1415 [668] 1590 [750]	1140 [538] 1355 [639] 1520 [717]
12ERAJS	11 x 10 [279 x 245]	3/4 [559]	LOW MED HIGH	1610 [760] 1870 [882] 2115 [998]	1580 [746] 1820 [860] 2050 [967]	1555 [734] 1775 [838] 1990 [939]	1515 [715] 1715 [809] 1945 [917]	1475 [696] 1660 [783] 1900 [897]	1415 [668] 1590 [750] 1795 [847]	1355 [639] 1520 [717] 1690 [795]

[] Designates Metric Conversions

GENERAL TERMS OF LIMITED WARRANTY

Rheem will furnish a replacement for any part of this product which fails in normal use and service within the applicable period stated, in accordance with the terms of the limited warranty.

For Complete Details of the Limited Warranty, Including Applicable Terms and Conditions, See Your Local Installer or Contact the Manufacturer for a Copy.

Primary and Secondary Heat Exchanger ... Twenty (20) Years
*Any Other Part.....Five (5) Years

*This five year limited warranty is applicable only to single-phase products installed in residential applications on or after January 1, 2001.

ACCESSORIES—UPFLOW

VENT TERMINATION KITS

CONCENTRIC: Vertical/Horizontal = RXGY-E03

HORIZONTAL TWO PIPE: RXGY-D02, RXGY-D03, RXGY-D04

CONDENSATE PUMP KIT: RXGY-B01
NEUTRALIZER KIT: RXGY-A01

FOSSIL FUEL KIT: RXPF-F01
 RXPF-F02 (TVA)

RETURN AIR PLENUM: RXGR-C17B
 RXGR-C21B
 RXGR-C24B

EXTERNAL BOTTOM FILTER RACK: RXGF-CB

EXTERNAL SIDE FILTER RACK: RXGF-CA

FILTER RACK FILTER SIZES* INCHES [mm]		
MODEL RGRJ-	RXGF-CB (BOTTOM)	RXGF-CA (SIDE)
04	15 ³ / ₄ x 25 [400 x 635]	15 ³ / ₄ x 25 [400 x 635]
06	15 ³ / ₄ x 25 [400 x 635]	15 ³ / ₄ x 25 [400 x 635]
07*M	15 ³ / ₄ x 25 [400 x 635]	15 ³ / ₄ x 25 [400 x 635]
07*Y	19 ¹ / ₄ x 25 [489 x 635]	15 ³ / ₄ x 25 [400 x 635]
09	19 ¹ / ₄ x 25 [489 x 635]	15 ³ / ₄ x 25 [400 x 635]
10	19 ¹ / ₄ x 25 [489 x 635]	15 ³ / ₄ x 25 [400 x 635]
12	22 ³ / ₄ x 25 [578 x 635]	15 ³ / ₄ x 25 [400 x 635]

*Filter racks are shipped without filters.
 Filters shipped with furnace may be used or a suitable 1" [25.4 mm] filter.

PLENUM DATA FOR "A" COILS

Plenum adapters are required in some instances for use on upflow applications when plenum and furnace size do not match.

FURNACE WIDTH IN. [mm]	PLENUM WIDTH IN. [mm]	PLENUM ADAPTER UPFLOW	COIL PLENUM
14 [356]	16 ¹ / ₄ [413]	RXAA-C171	RXAL-B16BU
14 [356]	20 ¹ / ₄ [514]	RXAA-C172	RXAL-B20BU
17 ¹ / ₂ [445]	16 ¹ / ₄ [413]	RXAA-C185	RXAL-B16BU
17 ¹ / ₂ [445]	20 ¹ / ₄ [514]	RXAA-C173	RXAL-B20BU
17 ¹ / ₂ [445]	21 ⁵ / ₈ [549]	RXAA-C187	RXAL-B21BU
17 ¹ / ₂ [445]	25 ¹ / ₄ [641]	RXAA-C174	RXAL-B25BU
21 [533]	25 ¹ / ₄ [641]	RXAA-C175	RXAL-B25BU
21 [533]	22 ¹ / ₄ [565]	RXAA-C176	RXAL-B22BU
21 [533]	21 ⁵ / ₈ [549]	RXAA-C188	RXAL-B21BU
24 ¹ / ₂ [622]	25 ¹ / ₄ [641]	RXAA-C177	RXAL-B25BU
24 ¹ / ₂ [622]	21 ⁵ / ₈ [549]	RXAA-C187	RXAL-B21BU

Note: See Form Number C11-206 for MultiFlex® coil data.

INTERNAL FILTER RACK FOR BOTTOM OR SIDE RETURN: RXGF-DA*

Each order contains (1) one box of 10 filter racks supplied without filters.

*Filters available through PROSTOCK®.

RXGP-F03

TWINNING KIT—is for use with Rheem Classic 90 Gas Furnaces for parallel operation requirements (not needed with RGRA- upflow gas furnaces).

WARNING: IMPORTANT NOTICE			
A SOLID METAL BASE PLATE (SEE TABLE) MUST BE IN PLACE WHEN THE FURNACE IS INSTALLED WITH SIDE OR REAR AIR RETURN DUCTS. FAILURE TO INSTALL A BASE PLATE COULD CAUSE PRODUCTS OF COMBUSTION TO BE CIRCULATED INTO THE LIVING SPACE AND CREATE POTENTIALLY HAZARDOUS CONDITIONS. SOLID BOTTOM IS AVAILABLE FACTORY INSTALLED WITH OPTION CODE 263.			
FURNACE WIDTH IN. [mm]	SOLID BOTTOM KIT NO.	BASE PLATE NO.	BASE PLATE SIZE IN. [mm]
17 ¹ / ₂ [445]	RXGB-D17	AE-61874-02	15 ¹ / ₈ x 23 ⁹ / ₁₆ [384 x 598]
21 [533]	RXGB-D21	AE-61874-03	18 ⁵ / ₈ x 23 ⁹ / ₁₆ [473 x 598]
24 ¹ / ₂ [622]	RXGB-D24	AE-61874-04	25 ⁵ / ₈ x 23 ⁹ / ₁₆ [651 x 598]

FOR HIGH ALTITUDES:

***HIGH ALTITUDE KIT:**

RXGY-F04 (105 KBTU/H)

RXGY-F05 (120 KBTU/H)

RXGY-F06 (45 KBTU/H/60 KBTU/H/90 KBTU/H)

RXGY-F07 (75 KBTU/H)

*For installations over 5000 ft.

OPTION CODE FOR HIGH ALTITUDE: US & Canada – 278

NOTE: High altitude kits and options do **NOT** include additional burner orifices. If a burner orifice change is necessary, they must be ordered through PROSTOCK®. See Installation Instructions for more information.

Option – 278 furnaces are shipped with #51 DMS orifices installed. This is one drill size smaller than standard furnaces to account for expected average elevations and heating values typically seen in these areas.

CAUTION: Always follow National Fuel Gas Code (NFGC) guidelines when converting for high altitudes.

For all installations above 2000 ft. (including all option – 278 models), the burner orifice size needs to be recalculated and verified. A burner orifice change may still be required. See Installation Instructions for more information.

NOTE: For Canadian installations only, an optional derate (manifold gas pressure reduction) method may be used to adjust the furnace for altitude. See Installation Instructions for more information. This optional method may **NOT** be used for U.S. installations.

[] Designates Metric Conversions

NOTES

Before proceeding with installation, refer to installation instructions packaged with each model, as well as complying with all Federal, State, Provincial, and Local codes, regulations, and practices.

**RHEEM
AIR CONDITIONING
DIVISION**

5600 Old Greenwood Road, Fort Smith, Arkansas 72908



"In keeping with its policy of continuous progress and product improvement, Rheem reserves the right to make changes without notice."