

CONDENSING UNITS

Rheem
Classic[®]
 S E R I E S

RANC- SERIES

13 SEER Models

With efficiencies up to 15.00 SEER
 in certain matched systems.

Nominal Sizes 2 to 5 Tons
 [7.03 kW] to [17.58 kW]



Seven Models

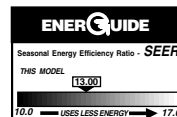
Cooling Capacities

23,400 to 53,000 BTU/HR
 [6.86 kW] to [15.53 kW]

The *Rheem Classic Series*[®] High Efficiency RANC- Condensing Unit was designed with performance in mind. These units offer comfort, energy conservation and dependability for single, multi-family and light commercial applications.

The *Rheem Classic Series*[®] RANC- Condensing Units are the result of an ongoing development program for improved efficiencies. With SEER's ranging to 15.00, these units continue a tradition of high efficiency.

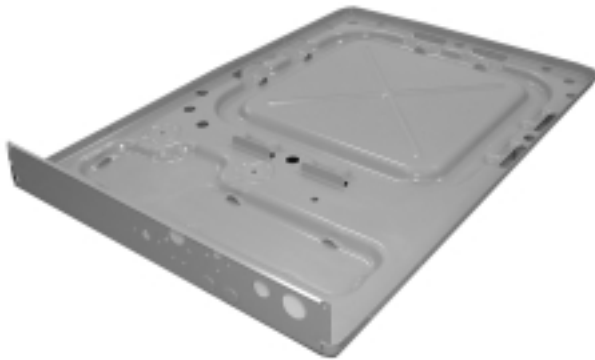
- Attractive, louvered wrap-around jacket protects the coil from yard hazards and weather extremes. Top grille is steel reinforced for extra strength. Cabinet is powder painted for all-weather protection.
- Air is discharged upward away from bushes and shrubs. The discharge pattern of the top grille provides minimum air restriction, resulting in quiet fan operation.
- Exclusive Combination Grille/Motor Mount secures the motor to the underside of the discharge grille. The grille protects the motor windings and bearings from rain and snow.
- All controls are accessible by removing one service panel. Removable top grille provides access to the condenser fan motor and condenser coil.
- Single speed motor designed for low speed, quiet, energy-saving operation.
- All models meet or exceed a 1000-hour salt spray test per ASTM B117 Standard Practice for Operating Salt Spray Testing Apparatus.



"CERTIFIED UNDER THE
 A.R.I. CERTIFICATION
 PROGRAM—A.R.I.
 STANDARD 210"



All controls and compressor are accessible for servicing by removal of the service panel.



Drawn Painted Base Pan.

Engineering Features

RANC- Series Condensing Units

1. Scroll compressor is hermetically sealed and incorporates internal high temperature motor overload protection, and durable insulation on the motor windings. It is externally mounted on rubber grommets to reduce vibration and noise.
2. Compressors have an internal pressure relief assembly to protect against excessive pressure differential.
3. All refrigerant connections are on the exterior of the unit, located close to the ground for neat appearing installations.
4. Cabinet is constructed of powder painted galvanized steel. The full wraparound louvered grille protects the coil from damage.
5. Copper Tube—Aluminum Fin coils are used on all models.
6. The control box is located in the top corner of the cabinet providing for easy access through a service panel.
7. Service valves are standard on all models.
8. Power and control wiring are kept separate.
9. Every unit is factory charged and tested.
10. Separate compressor compartment for easy service access.
11. Drawn, painted base pan for extra corrosion resistance and sound reduction.
12. **RANC—JAZ Series** has a **10 year compressor limited warranty** and a liquid line filter drier. The JAZ Series also has factory installed low pressure control, and high pressure control.
13. **Hard Start Kits**—Standard on all models.

Field Installed Accessories

- **Low Ambient Control**—Cycles outdoor fan to maintain adequate condensing pressures assuring liquid refrigerant flow to the coil. Allows indoor cooling with outdoor temperatures down to 0°F [-17.8°C]. (Model No. RXAD-A04)
It is recommended that this control be installed in units to be operated at outdoor ambient temperatures under 70°F [21°C].

COPELAND® SCROLL® COMPRESSOR

The Copeland scroll compressor is the key to efficiency for this Rheem model. It's the latest in high-efficiency compressor technology. The advanced scroll compressor offers low noise and vibration characteristics and features tolerance to liquid refrigerant and system contamination. The Copeland Scroll also has low start torque, eliminating start problems in the field. And its unique design enables the RANC- condensing unit to perform efficiently, quietly and reliably.



Model Number Identification

<u>R</u>	<u>A</u>	<u>N</u>	<u>C</u>	—	<u>024</u>	<u>J</u>	<u>A</u>	<u>Z</u>
RHEEM	REMOTE CONDENSING UNIT	HI-EFFICIENCY (STANDARD)	DESIGN SERIES		COOLING CAPACITY	ELECTRICAL DESIGNATION	VARIATIONS	COOLING CONNECTION FITTING
			C = THIRD DESIGN		024 = 24,000 BTU/HR [7.03 kW] 025 = 24,000 BTU/HR [7.03 kW] 030 = 30,000 BTU/HR [8.79 kW] 036 = 36,000 BTU/HR [10.55 kW] 042 = 42,000 BTU/HR [12.31 kW] 048 = 48,000 BTU/HR [14.07 kW] 060 = 60,000 BTU/HR [17.58 kW]	J = 208/230V-1-60	A = STANDARD	Z = SWEAT W/SCROLL

[] Designates Metric Conversions

Performance Data @ ARI Standard Conditions—Cooling

Model Numbers		80°F [26.5°C] DB/67°F [19.5°C] WB Indoor Air 95°F [35°C] DB Outdoor Air					Sound Rating	Indoor CFM [L/s]
Outdoor Unit RANC-	Indoor Coil and/or Air Handler	Total Capacity BTU/H [kW]	Net Sensible BTU/H [kW]	Net Latent BTU/H [kW]	EER	SEER		
024/025JA	RCGJ-24A2	23,400 [6.9]	17,100 [5.0]	6,300 [1.8]	10.95	12.50	7.4	800 [378]
	RCHJ-24A2	23,400 [6.9]	17,100 [5.0]	6,300 [1.8]	10.95	12.50	7.4	800 [378]
	RCQC-2417 ①	25,000 [7.3]	18,900 [5.5]	6,100 [1.8]	11.25	13.10	7.4	800 [378]
	RBHK-17+RCGJ-24A2	24,000 [7.0]	17,500 [5.1]	6,500 [1.9]	12.35	14.25	7.4	800 [378]
	RBHK-17+RCHJ-24A2	24,000 [7.0]	17,500 [5.1]	6,500 [1.9]	12.35	14.25	7.4	800 [378]
	RGFD-06?MCK?+RCGJ-24A2	24,000 [7.0]	17,500 [5.1]	6,500 [1.9]	12.05	14.00	7.4	800 [378]
	RGFD-06?MCK?+RCHJ-24A2	24,000 [7.0]	17,500 [5.1]	6,500 [1.9]	12.05	14.00	7.4	800 [378]
	RGFD-06?MCK?+RCQC-2417	25,200 [7.4]	19,100 [5.6]	6,100 [1.8]	11.95	14.05	7.4	800 [378]
	RGFD-07?MCK?+RCGJ-24A2	24,000 [7.0]	17,500 [5.1]	6,500 [1.9]	12.15	14.00	7.4	800 [378]
	RGFD-07?MCK?+RCHJ-24A2	24,000 [7.0]	17,500 [5.1]	6,500 [1.9]	12.15	14.00	7.4	800 [378]
	RGFD-07?MCK?+RCQC-2417	25,400 [7.4]	19,300 [5.7]	6,100 [1.8]	12.05	14.15	7.4	800 [378]
	RGLL-05?BMK?+RCGJ-24A2	24,200 [7.1]	17,700 [5.2]	6,500 [1.9]	12.50	14.45	7.4	800 [378]
	RGLL-05?BMK?+RCHJ-24A2	24,200 [7.1]	17,700 [5.2]	6,500 [1.9]	12.50	14.45	7.4	800 [378]
	RGLL-07?BRK?+RCGJ-24A2	24,200 [7.1]	17,700 [5.2]	6,500 [1.9]	12.60	14.60	7.4	800 [378]
	RGLL-07?BRK?+RCHJ-24A2	24,200 [7.1]	17,700 [5.2]	6,500 [1.9]	12.60	14.60	7.4	800 [378]
	RGPL-05?BMK?+RCGJ-24A2	24,200 [7.1]	17,700 [5.2]	6,500 [1.9]	12.55	14.50	7.4	800 [378]
	RGPL-05?BMK?+RCHJ-24A2	24,200 [7.1]	17,700 [5.2]	6,500 [1.9]	12.55	14.50	7.4	800 [378]
	RGPL-05?BMK?+RCQC-2417	25,600 [7.5]	19,500 [5.7]	6,100 [1.8]	12.50	14.70	7.4	800 [378]
	RGPL-07?BRK?+RCGJ-24A2	24,000 [7.0]	17,500 [5.1]	6,500 [1.9]	12.40	14.30	7.4	800 [378]
	RGPL-07?BRK?+RCHJ-24A2	24,000 [7.0]	17,500 [5.1]	6,500 [1.9]	12.40	14.30	7.4	800 [378]
030JA	RCGJ-36A1	29,200 [8.6]	21,100 [6.2]	8,100 [2.4]	10.90	12.50	7.4	1,000 [472]
	RCHJ-36A1	29,200 [8.6]	21,100 [6.2]	8,100 [2.4]	10.90	12.50	7.4	1,000 [472]
	RCQC-3617 ①	30,800 [9.0]	23,200 [6.8]	7,600 [2.2]	11.20	13.05	7.4	1,000 [472]
	RCQC-3621	30,800 [9.0]	23,200 [6.8]	7,600 [2.2]	11.20	13.05	7.4	1,000 [472]
	RBHK-21+RCGJ-36A1	30,200 [8.8]	22,100 [6.5]	8,100 [2.4]	12.05	14.05	7.4	1,000 [472]
	RBHK-21+RCHJ-36A1	30,200 [8.8]	22,100 [6.5]	8,100 [2.4]	12.05	14.05	7.4	1,000 [472]
	RGFD-06?MCK?+RCGJ-36A1	30,000 [8.8]	21,800 [6.4]	8,200 [2.4]	11.40	13.15	7.4	1,000 [472]
	RGFD-06?MCK?+RCHJ-36A1	30,000 [8.8]	21,800 [6.4]	8,200 [2.4]	11.40	13.15	7.4	1,000 [472]
	RGFD-06?MCK?+RCQC-3617	31,200 [9.1]	23,600 [6.9]	7,600 [2.2]	11.55	13.45	7.4	1,000 [472]
	RGFD-06?MCK?+RCQC-3621	31,200 [9.1]	23,600 [6.9]	7,600 [2.2]	11.60	13.55	7.4	1,000 [472]
	RGFD-07?MCK?+RCGJ-36A1	30,000 [8.8]	21,900 [6.4]	8,100 [2.4]	11.50	13.30	7.4	1,000 [472]
	RGFD-07?MCK?+RCHJ-36A1	30,000 [8.8]	21,900 [6.4]	8,100 [2.4]	11.50	13.30	7.4	1,000 [472]
	RGFD-07?MCK?+RCQC-3617	31,200 [9.1]	23,600 [6.9]	7,600 [2.2]	11.65	13.65	7.4	1,000 [472]
	RGFD-07?MCK?+RCQC-3621	31,200 [9.1]	23,600 [6.9]	7,600 [2.2]	11.75	13.70	7.4	1,000 [472]
	RGLL-05?BMK?+RCGJ-36A1	30,200 [8.8]	22,100 [6.5]	8,100 [2.4]	12.00	14.00	7.4	1,000 [472]
	RGLL-05?BMK?+RCHJ-36A1	30,200 [8.8]	22,100 [6.5]	8,100 [2.4]	12.00	14.00	7.4	1,000 [472]
	RGLL-07?BRK?+RCGJ-36A1	30,200 [8.8]	22,100 [6.5]	8,100 [2.4]	12.00	14.00	7.4	1,000 [472]
	RGLL-07?BRK?+RCHJ-36A1	30,200 [8.8]	22,100 [6.5]	8,100 [2.4]	12.00	14.00	7.4	1,000 [472]
	RGLL-07?BRQ?+RCGJ-36A1	30,000 [8.8]	21,900 [6.4]	8,100 [2.4]	11.50	13.30	7.4	1,000 [472]
	RGLL-07?BRQ?+RCHJ-36A1	30,000 [8.8]	21,900 [6.4]	8,100 [2.4]	11.50	13.30	7.4	1,000 [472]
	RGPL-05?BMK?+RCGJ-36A1	30,200 [8.8]	22,100 [6.5]	8,100 [2.4]	12.00	14.00	7.4	1,000 [472]
	RGPL-05?BMK?+RCHJ-36A1	30,200 [8.8]	22,100 [6.5]	8,100 [2.4]	12.00	14.00	7.4	1,000 [472]
	RGPL-05?BMK?+RCQC-3617	31,600 [9.3]	23,900 [7.0]	7,700 [2.3]	12.05	14.15	7.4	1,000 [472]
	RGPL-05?BMK?+RCQC-3621	31,600 [9.3]	24,000 [7.0]	7,600 [2.2]	12.20	14.35	7.4	1,000 [472]
	RGPL-07?BRK?+RCGJ-36A1	30,200 [8.8]	22,100 [6.5]	8,100 [2.4]	11.85	13.75	7.4	1,000 [472]
	RGPL-07?BRK?+RCHJ-36A1	30,200 [8.8]	22,100 [6.5]	8,100 [2.4]	11.85	13.75	7.4	1,000 [472]
	RGPL-07?BRK?+RCQC-3621	31,600 [9.3]	24,000 [7.0]	7,600 [2.2]	12.40	14.60	7.4	1,000 [472]
	RGPL-07?BRQ?+RCGJ-36A1	30,200 [8.8]	22,100 [6.5]	8,100 [2.4]	11.85	13.75	7.4	1,000 [472]
RGPL-07?BRQ?+RCHJ-36A1	30,200 [8.8]	22,100 [6.5]	8,100 [2.4]	11.85	13.75	7.4	1,000 [472]	
RGPL-07?BRQ?+RCQC-3621	31,400 [9.2]	23,800 [7.0]	7,600 [2.2]	12.20	14.30	7.4	1,000 [472]	
036JA	RCGJ-36A2	34,200 [10.0]	24,500 [7.2]	9,700 [2.8]	10.95	12.50	7.6	1,200 [566]
	RCHJ-36A2	34,200 [10.0]	24,500 [7.2]	9,700 [2.8]	10.95	12.50	7.6	1,200 [566]
	RCQC-3617	36,200 [10.6]	27,300 [8.0]	8,900 [2.6]	11.55	13.20	7.6	1,200 [566]

① Highest sales volume tested combination required by D.O.E. test procedures.

[] Designates Metric Conversions

Performance Data @ ARI Standard Conditions—Cooling (Con't)

Model Numbers		80°F [26.5°C] DB/67°F [19.5°C] WB Indoor Air 95°F [35°C] DB Outdoor Air					Sound Rating	Indoor CFM [L/s]
Outdoor Unit RANC-	Indoor Coil and/or Air Handler	Total Capacity BTU/H [kW]	Net Sensible BTU/H [kW]	Net Latent BTU/H [kW]	EER	SEER		
036JA	RCQC-3621 ①	36,400 [10.7]	27,300 [8.0]	9,100 [2.7]	11.50	13.05	7.6	1,200 [566]
	RBHK-21+RCGJ-36A2	35,200 [10.3]	25,700 [7.5]	9,500 [2.8]	12.45	14.05	7.6	1,200 [566]
	RBHK-21+RCHJ-36A2	35,200 [10.3]	25,700 [7.5]	9,500 [2.8]	12.45	14.05	7.6	1,200 [566]
	RGFD-07?MCK?+RCQC-3621	36,600 [10.7]	27,400 [8.0]	9,200 [2.7]	11.55	13.15	7.6	1,200 [566]
	RGFD-09?ZCM?+RCGJ-36A2	35,000 [10.3]	25,500 [7.5]	9,500 [2.8]	11.95	13.40	7.6	1,200 [566]
	RGFD-09?ZCM?+RCHJ-36A2	35,000 [10.3]	25,500 [7.5]	9,500 [2.8]	11.95	13.40	7.6	1,200 [566]
	RGFD-09?ZCM?+RCQC-3621	37,000 [10.8]	27,600 [8.1]	9,400 [2.8]	12.25	14.05	7.6	1,200 [566]
	RGFD-10?ZCM?+RCGJ-36A2	35,000 [10.3]	25,500 [7.5]	9,500 [2.8]	12.15	13.65	7.6	1,200 [566]
	RGFD-10?ZCM?+RCHJ-36A2	35,000 [10.3]	25,500 [7.5]	9,500 [2.8]	12.15	13.65	7.6	1,200 [566]
	RGFD-10?ZCM?+RCQC-3621	37,000 [10.8]	27,800 [8.1]	9,200 [2.7]	12.15	14.00	7.6	1,200 [566]
	RGFD-12?RCM?+RCGJ-36A2	35,000 [10.3]	25,500 [7.5]	9,500 [2.8]	12.15	13.65	7.6	1,200 [566]
	RGFD-12?RCM?+RCHJ-36A2	35,000 [10.3]	25,500 [7.5]	9,500 [2.8]	12.15	13.65	7.6	1,200 [566]
	RGLL-05?BMK?+RCGJ-36A2	35,200 [10.3]	25,700 [7.5]	9,500 [2.8]	12.40	14.00	7.6	1,200 [566]
	RGLL-05?BMK?+RCHJ-36A2	35,200 [10.3]	25,700 [7.5]	9,500 [2.8]	12.40	14.00	7.6	1,200 [566]
	RGLL-07?BRK?+RCGJ-36A2	35,200 [10.3]	25,700 [7.5]	9,500 [2.8]	12.50	14.10	7.6	1,200 [566]
	RGLL-07?BRK?+RCHJ-36A2	35,200 [10.3]	25,700 [7.5]	9,500 [2.8]	12.50	14.10	7.6	1,200 [566]
	RGLL-07?BRQ?+RCGJ-36A2	34,800 [10.2]	25,300 [7.4]	9,500 [2.8]	11.80	13.25	7.6	1,200 [566]
	RGLL-07?BRQ?+RCHJ-36A2	34,800 [10.2]	25,300 [7.4]	9,500 [2.8]	11.80	13.25	7.6	1,200 [566]
	RGLL-10?BRM?+RCGJ-36A2	35,200 [10.3]	25,700 [7.5]	9,500 [2.8]	12.45	14.05	7.6	1,200 [566]
	RGLL-10?BRM?+RCHJ-36A2	35200 [10.3]	25,700 [7.5]	9,500 [2.8]	12.45	14.05	7.6	1,200 [566]
	RGLL-12?ARM?+RCGJ-36A2	35200 [10.3]	25,700 [7.5]	9,500 [2.8]	12.40	14.00	7.6	1,200 [566]
	RGLL-12?ARM?+RCHJ-36A2	35,200 [10.3]	25,700 [7.5]	9,500 [2.8]	12.40	14.00	7.6	1,200 [566]
	RGPL-05?BMK?+RCGJ-36A2	35,200 [10.3]	25,700 [7.5]	9,500 [2.8]	12.35	14.00	7.6	1,200 [566]
	RGPL-05?BMK?+RCHJ-36A2	35,200 [10.3]	25,700 [7.5]	9,500 [2.8]	12.35	14.00	7.6	1,200 [566]
	RGPL-05?BMK?+RCQC-3617	36,600 [10.7]	27,700 [8.1]	8,900 [2.6]	12.15	14.00	7.6	1,200 [566]
	RGPL-05?BMK?+RCQC-3621	37,200 [10.9]	28,000 [8.2]	9,200 [2.7]	12.20	14.00	7.6	1,200 [566]
	RGPL-07?BRK?+RCGJ-36A2	35,000 [10.3]	25,500 [7.5]	9,500 [2.8]	12.05	13.55	7.6	1,200 [566]
	RGPL-07?BRK?+RCHJ-36A2	35,000 [10.3]	25,500 [7.5]	9,500 [2.8]	12.05	13.55	7.6	1,200 [566]
	RGPL-07?BRK?+RCQC-3621	37,200 [10.9]	28,000 [8.2]	9,200 [2.7]	12.50	14.30	7.6	1,200 [566]
	RGPL-07?BRQ?+RCGJ-36A2	35,000 [10.3]	25,500 [7.5]	9,500 [2.8]	12.15	13.65	7.6	1,200 [566]
	RGPL-07?BRQ?+RCHJ-36A2	35,000 [10.3]	25,500 [7.5]	9,500 [2.8]	12.15	13.65	7.6	1,200 [566]
	RGPL-07?BRQ?+RCQC-3621	36,800 [10.8]	27,700 [8.1]	9,100 [2.7]	12.10	14.00	7.6	1,200 [566]
RGPL-10?BRM?+RCGJ-36A2	35,200 [10.3]	25,700 [7.5]	9,500 [2.8]	12.45	14.05	7.6	1,200 [566]	
RGPL-10?BRM?+RCHJ-36A2	35,200 [10.3]	25,700 [7.5]	9,500 [2.8]	12.45	14.05	7.6	1,200 [566]	
RGPL-10?BRM?+RCQC-3621	37,000 [10.8]	27,900 [8.2]	9,100 [2.7]	12.25	14.00	7.6	1,200 [566]	
RGPL-12?ARM?+RCGJ-36A2	35,400 [10.4]	25,900 [7.6]	9,500 [2.8]	12.55	14.15	7.6	1,200 [566]	
RGPL-12?ARM?+RCHJ-36A2	35,400 [10.4]	25,900 [7.6]	9,500 [2.8]	12.55	14.15	7.6	1,200 [566]	
042JA	RCGJ-48A1	40,000 [11.7]	28,900 [8.5]	11,100 [3.3]	10.90	12.50	7.6	1,400 [661]
	RCHJ-48A1	40,000 [11.7]	28,900 [8.5]	11,100 [3.3]	10.90	12.50	7.6	1,400 [661]
	RCQC-4821 ①	43,000 [12.6]	32,200 [9.4]	10,800 [3.2]	11.25	13.25	7.6	1,400 [661]
	RCQC-4824	43,000 [12.6]	32,200 [9.4]	10,800 [3.2]	11.25	13.25	7.6	1,400 [661]
	RBHK-24+RCGJ-48A1	41,500 [12.2]	30,200 [8.8]	11,300 [3.3]	12.15	14.05	7.6	1,400 [661]
	RBHK-24+RCHJ-48A1	41,500 [12.2]	30,200 [8.8]	11,300 [3.3]	12.15	14.05	7.6	1,400 [661]
	RGFD-09?ZCM?+RCGJ-48A1	41,000 [12.0]	29,600 [8.7]	11,400 [3.3]	11.25	13.00	7.6	1,400 [661]
	RGFD-09?ZCM?+RCHJ-48A1	41,000 [12.0]	29,600 [8.7]	11,400 [3.3]	11.25	13.00	7.6	1,400 [661]
	RGFD-09?ZCM?+RCQC-4821	43,000 [12.6]	32,200 [9.4]	10,800 [3.2]	11.55	13.70	7.6	1,400 [661]
	RGFD-09?ZCM?+RCQC-4824	43,500 [12.7]	32,600 [9.6]	10,900 [3.2]	11.65	13.75	7.6	1,400 [661]
	RGFD-10?ZCM?+RCGJ-48A1	41,000 [12.0]	29,700 [8.7]	11,300 [3.3]	11.50	13.25	7.6	1,400 [661]
	RGFD-10?ZCM?+RCHJ-48A1	41,000 [12.0]	29,700 [8.7]	11,300 [3.3]	11.50	13.25	7.6	1,400 [661]
	RGFD-10?ZCM?+RCQC-4821	43,000 [12.6]	32,200 [9.4]	10,800 [3.2]	11.45	13.55	7.6	1,400 [661]
	RGFD-10?ZCM?+RCQC-4824	43,000 [12.6]	32,200 [9.4]	10,800 [3.2]	11.55	13.65	7.6	1,400 [661]
	RGFD-12?RCM?+RCGJ-48A1	41,000 [12.0]	29,700 [8.7]	11,300 [3.3]	11.60	13.35	7.6	1,400 [661]
	RGFD-12?RCM?+RCHJ-48A1	41,000 [12.0]	29,700 [8.7]	11,300 [3.3]	11.60	13.35	7.6	1,400 [661]

① Highest sales volume tested combination required by D.O.E. test procedures.

[] Designates Metric Conversions

Performance Data @ ARI Standard Conditions—Cooling

Outdoor Unit RANC-	Indoor Coil and/or Air Handler	80°F [26.5°C] DB/67°F [19.5°C] WB Indoor Air 95°F [35°C] DB Outdoor Air					Sound Rating	Indoor CFM [L/s]
		Total Capacity BTU/H [kW]	Net Sensible BTU/H [kW]	Net Latent BTU/H [kW]	EER	SEER		
042JA	RGFD-12?RCM?+RCQC-4824	43,000 [12.6]	32,200 [9.4]	10,800 [3.2]	11.60	13.70	7.6	1,400 [661]
	RGLL-07?BRQ?+RCGJ-48A1	41,000 [12.0]	29,600 [8.7]	11,400 [3.3]	11.30	13.00	7.6	1,400 [661]
	RGLL-07?BRQ?+RCHJ-48A1	41,000 [12.0]	29,600 [8.7]	11,400 [3.3]	11.30	13.00	7.6	1,400 [661]
	RGLL-10?BRM?+RCGJ-48A1	41,500 [12.2]	30,100 [8.8]	11,400 [3.3]	11.90	13.75	7.6	1,400 [661]
	RGLL-10?BRM?+RCHJ-48A1	41,500 [12.2]	30,100 [8.8]	11,400 [3.3]	11.90	13.75	7.6	1,400 [661]
	RGLL-12?ARM?+RCGJ-48A1	41,500 [12.2]	30,100 [8.8]	11,400 [3.3]	11.90	13.75	7.6	1,400 [661]
	RGLL-12?ARM?+RCHJ-48A1	41,500 [12.2]	30,100 [8.8]	11,400 [3.3]	11.90	13.75	7.6	1,400 [661]
	RGPL-07?BRQ?+RCGJ-48A1	41,000 [12.0]	29,700 [8.7]	11,300 [3.3]	11.55	13.30	7.6	1,400 [661]
	RGPL-07?BRQ?+RCHJ-48A1	41,000 [12.0]	29,700 [8.7]	11,300 [3.3]	11.55	13.30	7.6	1,400 [661]
	RGPL-07?BRQ?+RCQC-4821	43,000 [12.6]	32,200 [9.4]	10,800 [3.2]	11.45	13.50	7.6	1,400 [661]
	RGPL-07?BRQ?+RCQC-4824	43,000 [12.6]	32,200 [9.4]	10,800 [3.2]	11.55	13.65	7.6	1,400 [661]
	RGPL-10?BRM?+RCGJ-48A1	41,500 [12.2]	30,100 [8.8]	11,400 [3.3]	11.90	13.75	7.6	1,400 [661]
	RGPL-10?BRM?+RCHJ-48A1	41,500 [12.2]	30,100 [8.8]	11,400 [3.3]	11.90	13.75	7.6	1,400 [661]
	RGPL-10?BRM?+RCQC-4821	43,500 [12.7]	32,600 [9.6]	10,900 [3.2]	11.60	13.75	7.6	1,400 [661]
	RGPL-10?BRM?+RCQC-4824	43,500 [12.7]	32,600 [9.6]	10,900 [3.2]	11.75	14.00	7.6	1,400 [661]
	RGPL-12?ARM?+RCGJ-48A1	41,500 [12.2]	30,100 [8.8]	11,400 [3.3]	11.95	13.80	7.6	1,400 [661]
	RGPL-12?ARM?+RCHJ-48A1	41,500 [12.2]	30,100 [8.8]	11,400 [3.3]	11.95	13.80	7.6	1,400 [661]
	RGPL-12?ARM?+RCQC-4824	43,500 [12.7]	32,700 [9.6]	10,800 [3.2]	12.00	14.25	7.6	1,400 [661]
048JA	RCGJ-60A1	44,000 [12.9]	32,000 [9.4]	12,000 [3.5]	11.35	12.50	7.6	1,600 [755]
	RCHJ-60A1	44,000 [12.9]	32,000 [9.4]	12,000 [3.5]	11.35	12.50	7.6	1,600 [755]
	RCQC-4821	46,000 [13.5]	35,100 [10.3]	10,900 [3.2]	11.80	13.70	7.6	1,550 [731]
	RCQC-4824 ①	47,000 [13.8]	35,800 [10.5]	11,200 [3.3]	11.95	13.65	7.6	1,600 [755]
	RBHK-24+RCGJ-60A1	44,500 [13.0]	32,800 [9.6]	11,700 [3.4]	12.40	14.25	7.6	1,600 [755]
	RBHK-24+RCHJ-60A1	44,500 [13.0]	32,800 [9.6]	11,700 [3.4]	12.40	14.25	7.6	1,600 [755]
	RGFD-09?ZCM?+RCGJ-60A1	43,500 [12.7]	31,800 [9.3]	11,700 [3.4]	11.15	12.70	7.6	1,600 [755]
	RGFD-09?ZCM?+RCHJ-60A1	43,500 [12.7]	31,800 [9.3]	11,700 [3.4]	11.15	12.70	7.6	1,600 [755]
	RGFD-10?ZCM?+RCGJ-60A1	43,500 [12.7]	31,900 [9.3]	11,600 [3.4]	11.45	13.05	7.6	1,600 [755]
	RGFD-10?ZCM?+RCHJ-60A1	43,500 [12.7]	31,900 [9.3]	11,600 [3.4]	11.45	13.05	7.6	1,600 [755]
	RGFD-12?RCM?+RCGJ-60A1	44,000 [12.9]	32,300 [9.5]	11,700 [3.4]	11.80	13.50	7.6	1,600 [755]
	RGFD-12?RCM?+RCHJ-60A1	44,000 [12.9]	32,300 [9.5]	11,700 [3.4]	11.80	13.50	7.6	1,600 [755]
	RGFD-12?RCM?+RCQC-4824	47,000 [13.8]	35,800 [10.5]	11,200 [3.3]	12.00	13.75	7.6	1,600 [755]
	RGLL-07?BRQ?+RCGJ-60A1	43,500 [12.7]	31,800 [9.3]	11,700 [3.4]	11.25	12.80	7.6	1,600 [755]
	RGLL-07?BRQ?+RCHJ-60A1	43,500 [12.7]	31,800 [9.3]	11,700 [3.4]	11.25	12.80	7.6	1,600 [755]
	RGLL-10?BRM?+RCGJ-60A1	44,000 [12.9]	32,400 [9.5]	11,600 [3.4]	12.15	14.00	7.6	1,600 [755]
	RGLL-10?BRM?+RCHJ-60A1	44,000 [12.9]	32,400 [9.5]	11,600 [3.4]	12.15	14.00	7.6	1,600 [755]
	RGLL-12?ARM?+RCGJ-60A1	44,000 [12.9]	32,400 [9.5]	11,600 [3.4]	12.05	13.80	7.6	1,600 [755]
	RGLL-12?ARM?+RCHJ-60A1	44,000 [12.9]	32,400 [9.5]	11,600 [3.4]	12.05	13.80	7.6	1,600 [755]
	RGPL-07?BRQ?+RCGJ-60A1	43,500 [12.7]	31,900 [9.3]	11,600 [3.4]	11.55	13.15	7.6	1,600 [755]
	RGPL-07?BRQ?+RCHJ-60A1	43,500 [12.7]	31,900 [9.3]	11,600 [3.4]	11.55	13.15	7.6	1,600 [755]
	RGPL-10?BRM?+RCGJ-60A1	44,000 [12.9]	32,400 [9.5]	11,600 [3.4]	12.05	13.80	7.6	1,600 [755]
	RGPL-10?BRM?+RCHJ-60A1	44,000 [12.9]	32,400 [9.5]	11,600 [3.4]	12.05	13.80	7.6	1,600 [755]
	RGPL-10?BRM?+RCQC-4821	46,000 [13.5]	35,100 [10.3]	10,900 [3.2]	11.80	13.70	7.6	1,550 [731]
RGPL-10?BRM?+RCQC-4824	47,000 [13.8]	35,800 [10.5]	11,200 [3.3]	12.05	13.75	7.6	1,600 [755]	
RGPL-12?ARM?+RCGJ-60A1	44,000 [12.9]	32,400 [9.5]	11,600 [3.4]	12.10	14.00	7.6	1,600 [755]	
RGPL-12?ARM?+RCHJ-60A1	44,000 [12.9]	32,400 [9.5]	11,600 [3.4]	12.10	14.00	7.6	1,600 [755]	
RGPL-12?ARM?+RCQC-4824	47,500 [13.9]	36,300 [10.6]	11,200 [3.3]	12.40	14.25	7.6	1,600 [755]	
060JA	RCGJ-60A1	51,000 [14.9]	36,200 [10.6]	14,800 [4.3]	11.00	12.40	7.8	1,800 [849]
	RCHJ-60A1	51,000 [14.9]	36,200 [10.6]	14,800 [4.3]	11.00	12.40	7.8	1,800 [849]
	RCQC-6024 ①	53,000 [15.5]	40,300 [11.8]	12,700 [3.7]	11.35	13.10	7.8	1,800 [849]
	RBHK-25+RCGJ-60A1	52,000 [15.2]	37,200 [10.9]	14,800 [4.3]	11.85	13.50	7.8	1,800 [849]
	RBHK-25+RCHJ-60A1	52,000 [15.2]	37,200 [10.9]	14,800 [4.3]	11.85	13.50	7.8	1,800 [849]

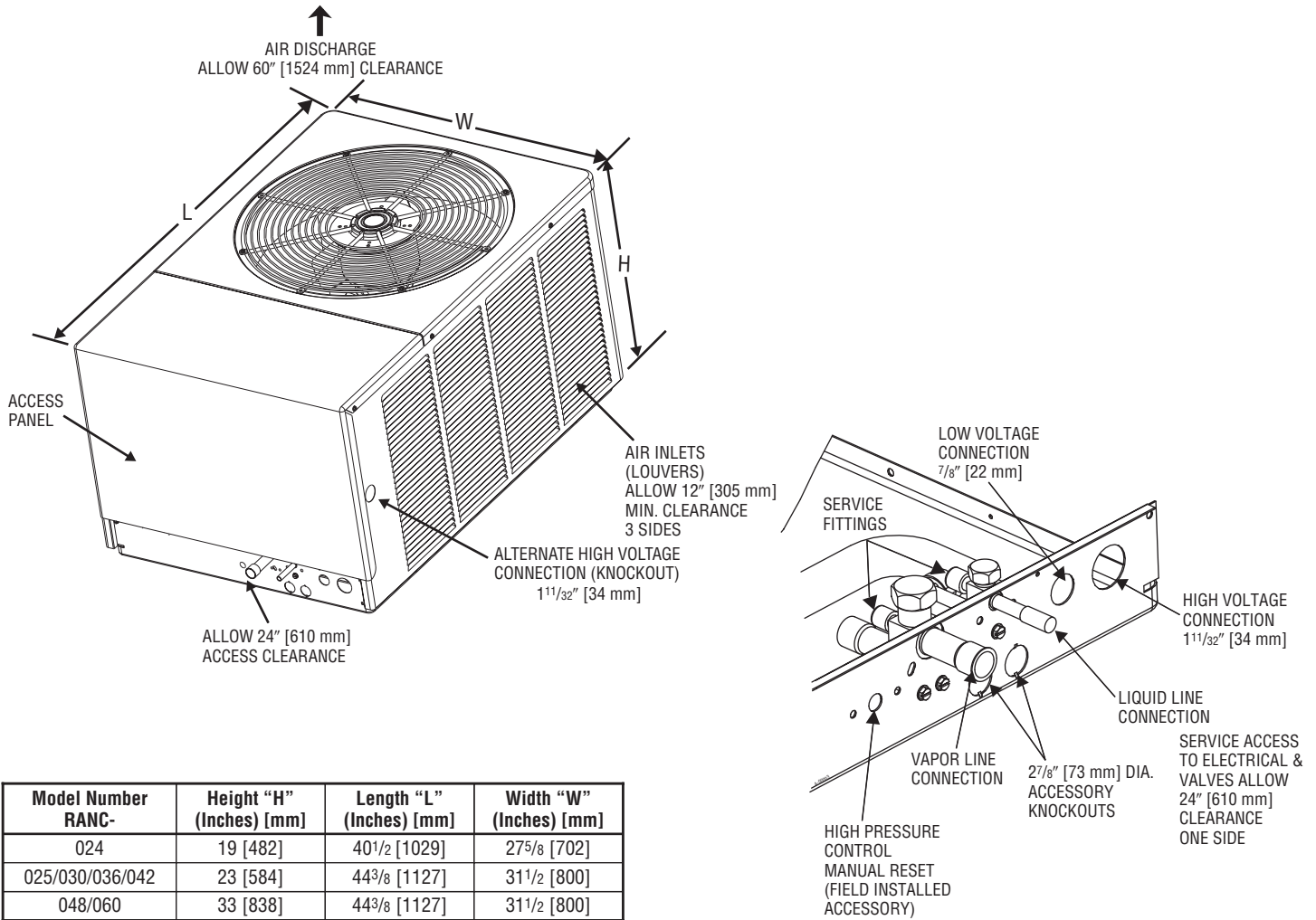
① Highest sales volume tested combination required by D.O.E. test procedures.

[] Designates Metric Conversions

Electrical and Physical Data

Model Number RANC-	ELECTRICAL						PHYSICAL						
	Phase Frequency (Hz) Voltage (Volts)	Compressor		Fan Motor Full Load Amperes (FLA)	Minimum Circuit Ampacity Amperes	Fuse or HACR Circuit Breaker		Outdoor Coil			R22 Oz. [g]	Weight	
		Rated Load Amperes (RLA)	Locked Rotor Amperes (LRA)			Minimum Amperes	Maximum Amperes	Face Area Sq. Ft. [m ²]	No. Rows	CFM [L/s]		Net Lbs. [kg]	Shipping Lbs. [kg]
024JA	1-60-208/230	10.9/10.9	56.0	0.75	15/15	20/20	25/25	15.8 [1.47]	1.00	2285 [1078]	114 [3232]	190 [86.2]	200 [90.7]
025JA	1-60-208/230	10.9/10.9	56.0	0.75	15/15	20/20	25/25	15.8 [1.47]	1.00	2285 [1078]	114 [3232]	190 [86.2]	200 [90.7]
030JA	1-60-208/230	13.5/13.5	72.5	0.75	18/18	25/25	30/30	15.8 [1.47]	1.00	2200 [1038]	104 [2948]	200 [90.7]	210 [95.3]
036JA	1-60-208/230	16.0/16.0	88.0	1.00	22/22	25/25	35/35	15.4 [1.43]	2.00	2600 [1227]	183 [5188]	235 [106.6]	245 [111.1]
042JA	1-60-208/230	17.9/17.9	104.0	1.00	24/24	30/30	40/40	15.4 [1.43]	2.00	2600 [1227]	157 [4451]	235 [106.6]	245 [111.1]
048JA	1-60-208/230	18.3/18.3	109.0	1.50	25/25	30/30	40/40	22.4 [2.08]	2.00	3500 [1652]	240 [6804]	300 [136.1]	310 [140.6]
060JA	1-60-208/230	19.9/19.9	137.0	1.50	27/27	35/35	45/45	22.4 [2.08]	2.00	3500 [1652]	262 [7428]	305 [138.3]	315 [142.9]

Unit Dimensions



BEFORE PURCHASING THIS APPLIANCE, READ IMPORTANT ENERGY COST AND EFFICIENCY INFORMATION AVAILABLE FROM YOUR RETAILER.

GENERAL TERMS OF LIMITED WARRANTY

Rheem will furnish a replacement for any part of this product which fails in normal use and service within the applicable period stated, in accordance with the terms of the limited warranty.

For Complete Details of the Limited Warranty, Including Applicable Terms and Conditions, See Your Local Installer or Contact the Manufacturer for a Copy.

Condenser Coil leaks caused by factory defects.....Five (5) Years
 CompressorTen (10) Years
 *Any Other PartFive (5) Years

*This five year limited warranty is applicable only to single-phase products installed in residential applications on or after January 1, 2001.

Condensing Unit Refrigerant Line Size Information

System Capacity Tons [kW]	Line Size (Inch O.D.) [mm]	Liquid Line Size Outdoor Unit Above Indoor Coil						Liquid Line Size Outdoor Unit Below Indoor Coil						
		Total Length—Feet [m]						Total Length—Feet [m]						
		25 [7.62]	50 [15.24]	75 [22.86]	100 [30.48]	125 [38.10]	150 [45.72]	25 [7.62]	50 [15.24]	75 [22.86]	100 [30.48]	125 [38.10]	150 [45.72]	
		Vertical Separation—Feet [m]						Vertical Separation—Feet [m]						
024/025	1/4* [6.35]	25 [7.62]	50 [15.24]					23 [7.01]	23 [7.01]					
	5/16 [7.94]		24 [7.32]	34 [10.36]	44 [13.41]	54 [16.46]	64 [19.51]		48 [14.63]	38 [11.58]	28 [8.53]	18 [5.49]	8 [2.44]	
030	1/4* [6.35]	25 [7.62]	50 [15.24]					23 [7.01]	23 [7.01]					
	5/16 [7.94]		19 [5.79]	33 [10.06]	47 [14.33]	61 [18.59]			50 [15.24]	39 [11.89]	25 [7.62]	11 [3.35]		
	3/8 [9.53]					11 [3.35]	15 [4.57]						57 [17.37]	
036	5/16* [7.94]	25 [7.62]	50 [15.24]	70 [21.34]				23 [7.01]	23 [7.01]	9 [2.74]				
	3/8 [9.53]			34 [10.36]	40 [12.19]	46 [14.02]	52 [15.85]			38 [11.58]	32 [9.75]	26 [7.92]	20 [6.10]	
042	5/16* [7.94]	25 [7.62]	50 [15.24]	75 [22.86]				23 [7.01]	23 [7.01]	9 [2.74]				
	3/8 [9.53]			32 [9.75]	39 [11.89]	46 [14.02]	53 [16.15]			40 [12.19]	33 [10.06]	26 [7.92]	19 [5.79]	
048	3/8* [9.53]	25 [7.62]	44 [13.41]	53 [16.15]	61 [18.59]	70 [21.34]		23 [7.01]	28 [8.53]	19 [5.79]	11 [3.35]	3 [0.91]		
	1/2 [12.7]					37 [11.28]	39 [11.89]					35 [10.67]	33 [10.06]	
060	3/8* [9.53]	25 [7.62]	48 [14.63]	61 [18.59]	72 [21.95]			23 [7.01]	23 [7.01]	11 [3.35]	3 [0.91]			
	1/2 [12.7]				35 [10.67]	38 [11.58]	41 [12.50]				37 [11.28]	34 [10.36]	31 [9.45]	

*Standard line size

NOTES:

- This chart is applicable for condensing units.
- If the separation height exceeds the table values, **reduce** the indoor coil flow-check piston two sizes plus one size for each additional 10 feet [3.05 m].
Example 1: A 5 ton [17.58 kW] *condensing unit* with a total line length of 125 feet [38.10 m] with a vertical separation of 101 feet [30.78 m] utilizing a 1/2" [12.7 mm] liquid line: Table = 38 feet [11.58 m] maximum vertical separation for 125 feet [38.10 m] run. Separation exceeds table by (101-38) = 63 feet [19.20 m]. Therefore, reduce the indoor coil flow-check piston 2 + 6 = 8 sizes (For example, a #89 piston would reduce to a #81 piston)
- Do not exceed 120 feet [36.58 m] maximum vertical separation.
- No changes are required for expansion valve coils.
- Do not exceed table values for capillary tube coils.
- Always use the smallest liquid line possible to minimize system charge.
- Chart may be used to size horizontal runs.

NOTES:

- This chart is applicable for condensing units.
Example 1: A 2.5 ton [8.79 kW] *condensing unit* with a total line length of 75 feet [22.86 m] with a vertical separation of 30 feet [9.14 m] requires a liquid line size of 5/16" [7.94 mm].
- This chart may also be used to size horizontal runs.
Example 2: A 5 ton [17.58 kW] *condensing unit* may have a total horizontal run of 100 feet [30.48 m] if using the 3/8" [9.53 mm] liquid line. The total horizontal run if using 1/2" [12.7 mm] liquid line size will be 150 feet [45.72 m]
- Do not exceed vertical separation as indicated on the chart.
- Always use the smallest liquid line possible to minimize system charge.
- No changes required for flow-check pistons or expansion valve coils.

Suction Line Length/Size versus Capacity Multiplier							
RANC-		024/025	030	036	042	048	060
Unit Suction Line Connection Size		3/4" [19.05 mm] I.D. Sweat			7/8" [22.23 mm] I.D. Sweat		1 1/8" [28.58 mm] I.D. Sweat*
Suction Line Run—Feet [m]		5/8" [15.88 mm] O.D. Optional 3/4" [19.05 mm] O.D. Standard 7/8" [22.23 mm] O.D. Optional			3/4" [19.05 mm] O.D. Optional 7/8" [22.23 mm] O.D. Standard 1 1/8" [28.58 mm] O.D. Optional		7/8" [22.23 mm] O.D. Optional 1 1/8" [28.58 mm] O.D. Standard 1 3/8" [34.93 mm] O.D. Optional
25' [7.62]	Optional	.98	—	—	—	.99	.99
	Standard	1.00	1.00	1.00	1.00	1.00	1.00
	Optional	1.01	1.01	1.01	1.01	1.01	1.01
50' [15.24]	Optional	.96	—	—	—	.97	.97
	Standard	.99	.99	.98	.99	1.00	.99
	Optional	1.00	1.00	1.00	1.01	1.01	1.01
100' [30.48]	Optional	.93	—	—	—	.96	.95
	Standard	.98	.97	.96	.98	.99	.99
	Optional	.99	.99	.99	1.00	1.00	1.00
150' [45.72]	Optional	—	—	—	—	.93	.93
	Standard	.97	.95	.93	.96	.99	.98
	Optional	.98	.97	.97	.99	1.00	.99

NOTES: Capacity Multiplier x Rated Capacity = Actual Capacity.
 Additional compressor oil is **not** required for runs up to 150 feet [45.72 m].
 Oil traps in vertical runs are **not** required for any height up to 125 feet [38.10 m]. See Liquid Line chart for Vertical Separation Requirements and Limitations.
 *Adapter to 1 1/8" [28.58 mm] factory supplied.

[] Designates Metric Conversions

Before proceeding with installation, refer to installation instructions packaged with each model, as well as complying with all Federal, State, Provincial, and Local codes, regulations, and practices.

**RHEEM
AIR CONDITIONING
DIVISION**

5600 Old Greenwood Road, Fort Smith, Arkansas 72908



"In keeping with its policy of continuous progress and product improvement, Rheem reserves the right to make changes without notice."